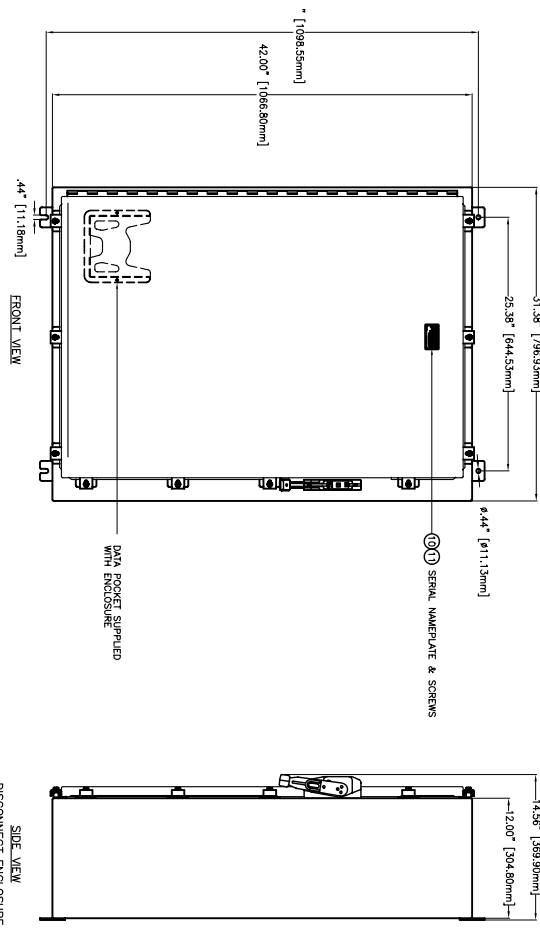
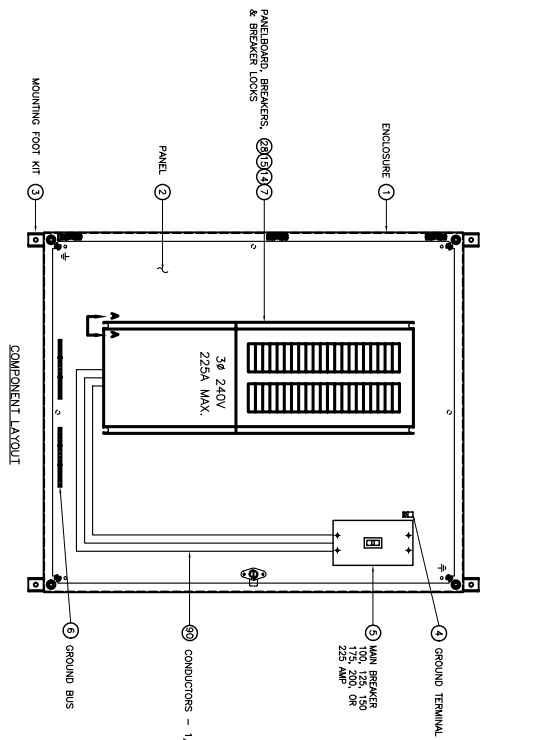


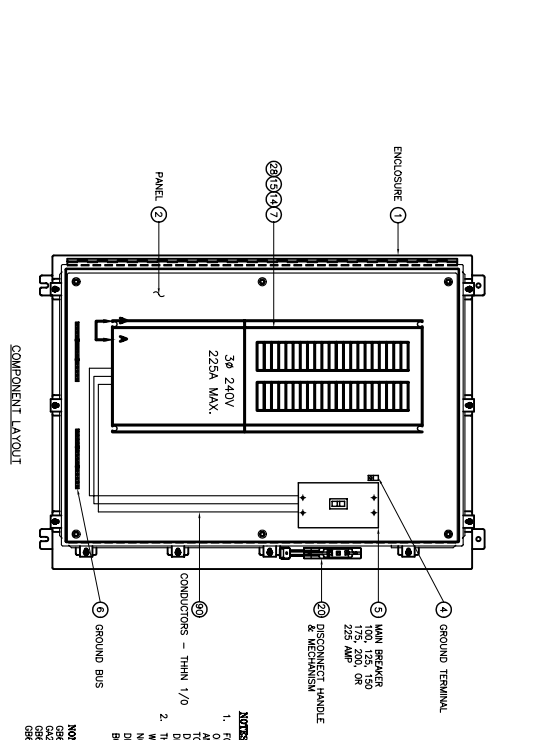
NON-DISCONNECT ENCLOSURE



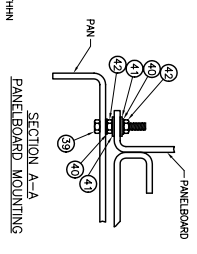
DISCONNECT ENCLOSURE



COMPONENT LAYOUT



COMPONENT LAYOUT



SECTION A-A
PANELBOARD MOUNTING

- NOTE:**
- FOR THE NON-DISCONNECT ENCLOSURE THE CUSTOMER HAS TWO CHOICES OF ENCLOSURE MOUNTING. EXTERNAL MOUNTING FEET ARE STANDARD AND MOUNTING DIMENSIONS WILL BE AS SHOWN. IF THE CUSTOMER DESIRES INTERNAL MOUNTING, THESE DIMENSIONS DO NOT APPLY TO THE DISCONNECT ENCLOSURE PRODUCT. THE NON-DISCONNECT ENCLOSURE WILL BE MOUNTED TO THE PANEL USING THE MOUNTING FOOT KIT.
 - NON-DISCONNECT ENCLOSURE AVAILABLE IN NEMA 12 & 4, 4X, BUILT-ON BREAKERS.
- REFERENCE DRAWINGS**
- | | |
|--------------------------|----------------------|
| NON-DISCONNECT ENCLOSURE | DISCONNECT ENCLOSURE |
| WIRING DIAGRAM | WIRING DIAGRAM |
| FIELD WIRING (18) | FIELD WIRING (18) |
| FIELD WIRING (19) | FIELD WIRING (19) |
| FIELD WIRING (19) | FIELD WIRING (19) |

CONTRACT SPECIFICATIONS - INFORMATION CONTAINED HEREIN IS CONFIDENTIAL, IT IS THE PROPERTY OF NELSON HEAT TRACING SYSTEMS, INC. AND IS NOT TO BE REPRODUCED OR TRANSMITTED IN ANY FORM OR BY ANY MEANS, WITHOUT THE WRITTEN CONSENT OF NELSON HEAT TRACING SYSTEMS, INC.

DATE	REVISION	DESCRIPTION
08/23/20	01	INITIAL RELEASE
08/23/20	02	REVISION
08/23/20	03	REVISION
08/23/20	04	REVISION
08/23/20	05	REVISION
08/23/20	06	REVISION
08/23/20	07	REVISION
08/23/20	08	REVISION
08/23/20	09	REVISION
08/23/20	10	REVISION
08/23/20	11	REVISION
08/23/20	12	REVISION
08/23/20	13	REVISION
08/23/20	14	REVISION
08/23/20	15	REVISION
08/23/20	16	REVISION
08/23/20	17	REVISION
08/23/20	18	REVISION
08/23/20	19	REVISION
08/23/20	20	REVISION
08/23/20	21	REVISION
08/23/20	22	REVISION
08/23/20	23	REVISION
08/23/20	24	REVISION
08/23/20	25	REVISION
08/23/20	26	REVISION
08/23/20	27	REVISION
08/23/20	28	REVISION
08/23/20	29	REVISION
08/23/20	30	REVISION