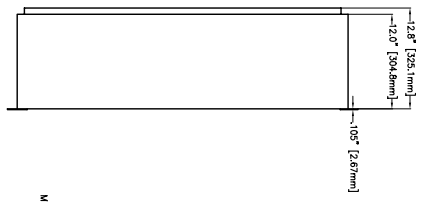
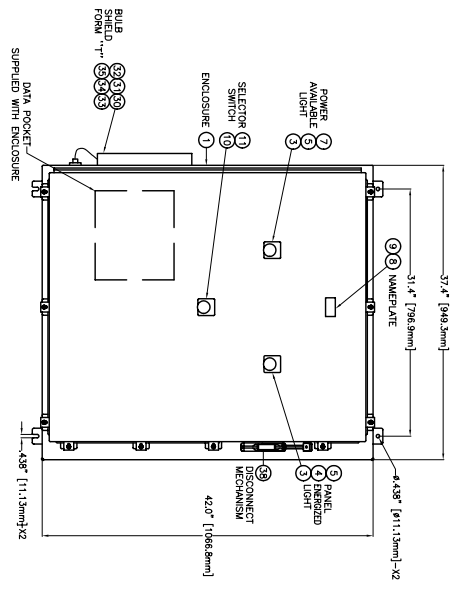
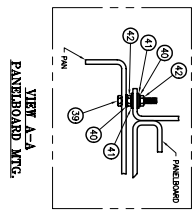
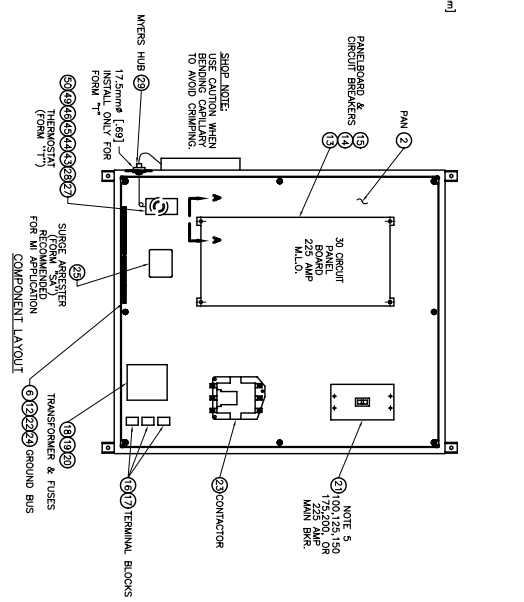


FRONT VIEW

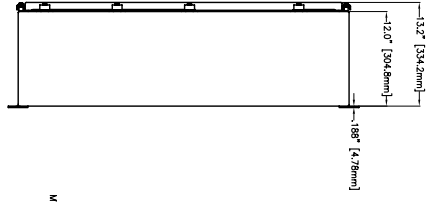


SIDE VIEW

NON-DISCONNECT ENCLOSURE

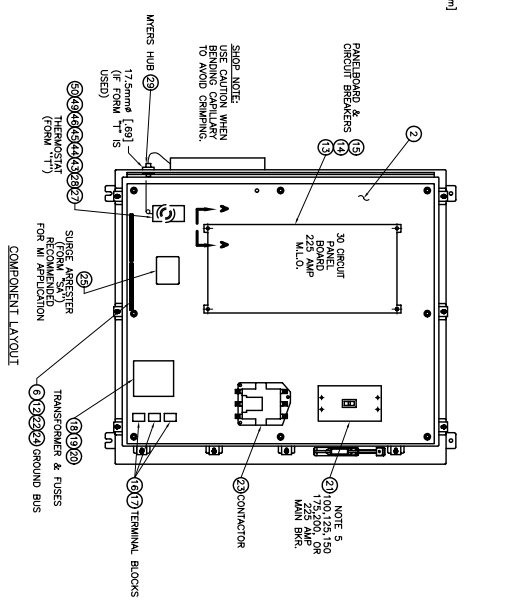


FRONT VIEW



SIDE VIEW

DISCONNECT ENCLOSURE



- NOTES:**
- FOR THE NON-DISCONNECT ENCLOSURE, THE CUSTOMER HAS TWO CHOICES OF ENCLOSURE MOUNTING. EXTERNAL MOUNTING FEET CAN BE INSTALLED AND DIMENSIONS WILL BE AS SHOWN. IF THE CUSTOMER CHOOSES TO MOUNT THE ENCLOSURE INTERNALLY, DIMENSIONS WILL BE AS SHOWN. THESE STATEMENTS DO NOT APPLY TO THE DISCONNECT ENCLOSURE PRODUCT.
 - THE DISCONNECT ENCLOSURE IS AVAILABLE IN TWO OPTIONS:
 - FORM 1 - INTERNAL THERMOSTAT
 - FORM 2A - SURGE ARRESTER
 - NON-DISCONNECT ENCLOSURE AVAILABLE IN NEMA 12 & 4, 4K.
 - DISCONNECT ENCLOSURE AVAILABLE IN NEMA 12 & 4, 4K.

REFERENCE DRAWING

ENCLOSURE	MANUFACTURE	DESCRIPTION
NON-DISCONNECT ENCLOSURE	INTERNATIONAL ASSEMBLY CONTROL PANEL	FORM 1 - INTERNAL THERMOSTAT
DISCONNECT ENCLOSURE	INTERNATIONAL ASSEMBLY CONTROL PANEL	FORM 2A - SURGE ARRESTER

DATE	BY	DESCRIPTION	DATE	BY	DESCRIPTION
03/09/99	RD	REV 1	03/09/99	RD	REV 1
03/09/99	RD	REV 2	03/09/99	RD	REV 2
03/09/99	RD	REV 3	03/09/99	RD	REV 3
03/09/99	RD	REV 4	03/09/99	RD	REV 4
03/09/99	RD	REV 5	03/09/99	RD	REV 5

ASSEMBLY

ITEM	DESCRIPTION	QTY	UNIT
1	INTERNATIONAL ASSEMBLY CONTROL PANEL	1	EA
2	INTERNATIONAL ASSEMBLY CONTROL PANEL	1	EA
3	WIRING DIAGRAM 1#	1	EA
4	WIRING DIAGRAM 1#	1	EA
5	FIELD WIRING (1#)	1	EA

NEILSON HEAT TREATING SYSTEMS

1000 W. 10th St., Suite 100, Lincoln, NE 68502-3908

402-466-2222

CD-387