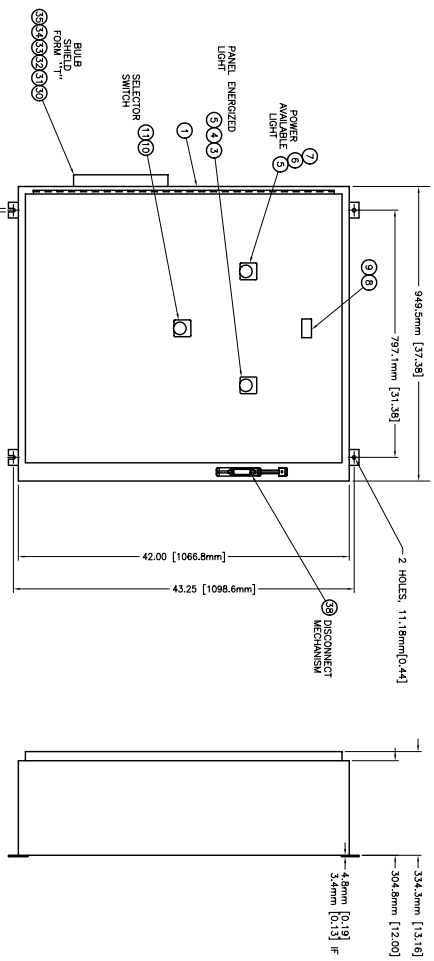
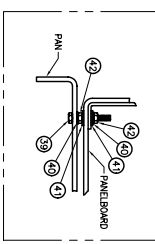
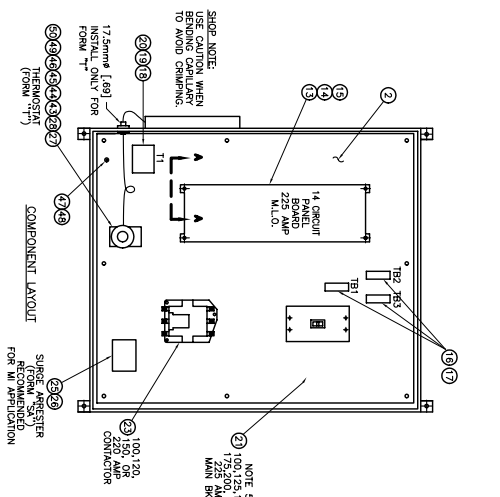
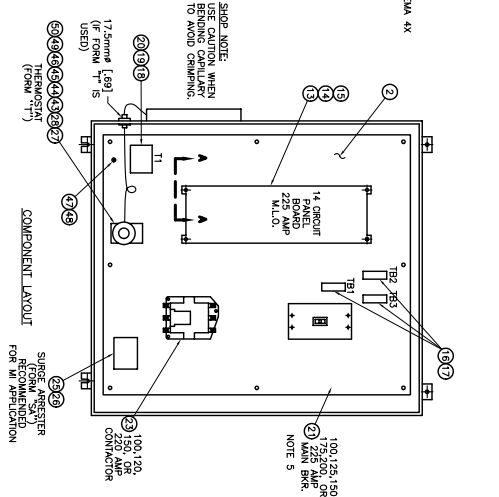


**NON-DISCONNECT ENCLOSURE**



**DISCONNECT ENCLOSURE**



**NOTES:**

- FOR THE NON-DISCONNECT ENCLOSURE, THE CUSTOMER HAS TWO CHOICES OF ENCLOSURE MOUNTING. EXTERNAL MOUNTING FEET CAN BE INSTALLED AND MOUNTING DIMENSIONS WILL BE AS SHOWN. IF THE CUSTOMER PREFERRED INTERNAL MOUNTING, THESE DIMENSIONS WILL BE AS SHOWN. IF THE CUSTOMER PREFERRED DIMENSIONS SHOWN, THESE STATEMENTS DO NOT APPLY TO THE DISCONNECT ENCLOSURE PRODUCT.
- THE ENCLOSURE IS AVAILABLE IN TWO TYPES:  
1) FORM D - INTERNAL THERMOSTAT  
2) FORM T - DISCONNECT ENCLOSURE  
WITH BLOC-ON BREAKERS. THE NON-DISCONNECT ENCLOSURE IS AVAILABLE IN TWO TYPES:  
1) FORM D - INTERNAL THERMOSTAT  
2) FORM S - SNOW-MELT APPLICATION
- NON-DISCONNECT ENCLOSURE AVAILABLE IN NEMA 12 & 4, 4X.
- DISCONNECT ENCLOSURE AVAILABLE IN NEMA 12 & 4, 4X.
- MAIN BREAKER AND CONTACTOR ARE CHOSEN IN Pairs. EXAMPLE: IF A 150 AMPERE MAIN BREAKER IS NEEDED, A SUITABLE CONTACTOR IS AUTOMATICALLY CHOSEN.

**REFERENCE DRAWING**

- | NON-DISCONNECT ENCLOSURE | DISCONNECT ENCLOSURE |
|--------------------------|----------------------|
| 01-1500                  | 01-1500              |
| 02-1500                  | 02-1500              |
| 03-1500                  | 03-1500              |
| 04-1500                  | 04-1500              |
| 05-1500                  | 05-1500              |
| 06-1500                  | 06-1500              |
| 07-1500                  | 07-1500              |
| 08-1500                  | 08-1500              |
| 09-1500                  | 09-1500              |
| 10-1500                  | 10-1500              |
| 11-1500                  | 11-1500              |
| 12-1500                  | 12-1500              |
| 13-1500                  | 13-1500              |
| 14-1500                  | 14-1500              |
| 15-1500                  | 15-1500              |
| 16-1500                  | 16-1500              |
| 17-1500                  | 17-1500              |
| 18-1500                  | 18-1500              |
| 19-1500                  | 19-1500              |
| 20-1500                  | 20-1500              |
| 21-1500                  | 21-1500              |
| 22-1500                  | 22-1500              |
| 23-1500                  | 23-1500              |
| 24-1500                  | 24-1500              |
| 25-1500                  | 25-1500              |
| 26-1500                  | 26-1500              |
| 27-1500                  | 27-1500              |
| 28-1500                  | 28-1500              |
| 29-1500                  | 29-1500              |
| 30-1500                  | 30-1500              |
| 31-1500                  | 31-1500              |
| 32-1500                  | 32-1500              |
| 33-1500                  | 33-1500              |
| 34-1500                  | 34-1500              |
| 35-1500                  | 35-1500              |
| 36-1500                  | 36-1500              |
| 37-1500                  | 37-1500              |
| 38-1500                  | 38-1500              |
| 39-1500                  | 39-1500              |
| 40-1500                  | 40-1500              |
| 41-1500                  | 41-1500              |
| 42-1500                  | 42-1500              |
| 43-1500                  | 43-1500              |
| 44-1500                  | 44-1500              |
| 45-1500                  | 45-1500              |
| 46-1500                  | 46-1500              |
| 47-1500                  | 47-1500              |
| 48-1500                  | 48-1500              |
| 49-1500                  | 49-1500              |
| 50-1500                  | 50-1500              |

REVISION	DATE	BY	DESCRIPTION
1	01/23/97	AM	INITIAL DESIGN
2	02/20/97	AM	REVISED FOR MANUFACTURE
3	03/20/97	AM	REVISED FOR MANUFACTURE

DATE	BY	DESCRIPTION
01/23/97	AM	INITIAL DESIGN
02/20/97	AM	REVISED FOR MANUFACTURE
03/20/97	AM	REVISED FOR MANUFACTURE

DATE	BY	DESCRIPTION
01/23/97	AM	INITIAL DESIGN
02/20/97	AM	REVISED FOR MANUFACTURE
03/20/97	AM	REVISED FOR MANUFACTURE