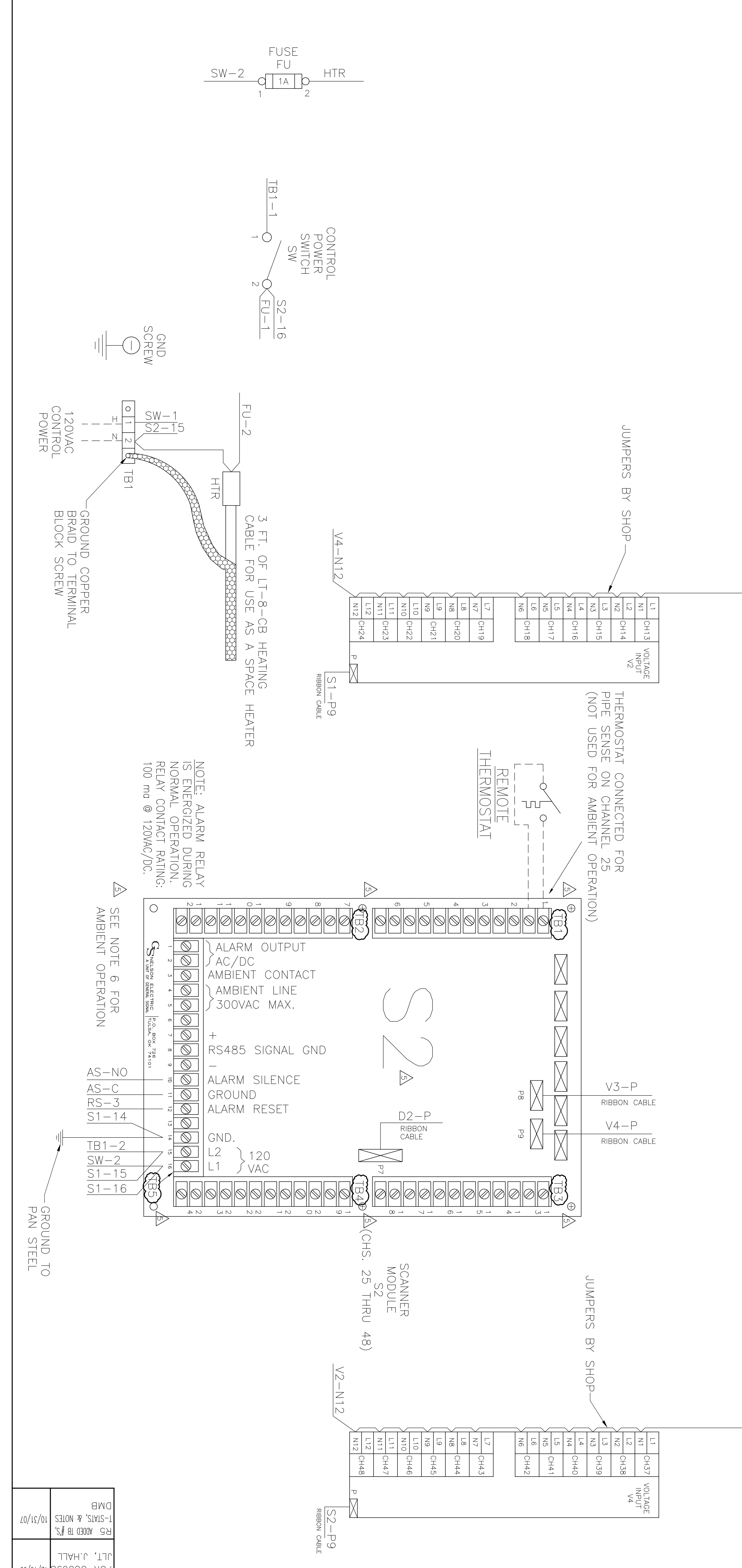


- NOTES:**
- CONTROL WIRE TO BE #18 TYPE SIS (DOES NOT APPLY TO RIBBON CABLE).
 - DO NOT ROUTE RIBBON CABLE IN WIRE DUCTS. RIBBON CABLE TO CROSS WIRE DUCTS AT 90°.
 - SEE INSTRUCTION SHEET ON REAR OF DOOR FOR IDENTIFICATION OF OPTION FEATURES.
 - ALL WIRE TO HAVE INSULATED SPADE LUGS & NATVAR TUBING WITH PRINTED WIRE NUMBERS. OMIT LUGS ON COMPRESSION OR SADDLE TYP TERMINALS.
 - SEE GA1760 FOR PROGRAMMING PIN DETAILS.
 - FOR AMBIENT OPERATION MAKE ONE OF THE FOLLOWING CONNECTIONS: CONNECT A THERMOSTAT DRY CONTACT BETWEEN TB5 TERMINALS 3 & 11, OR UP TO 300VAC BETWEEN TB5 TERMINALS 4 & 5.
 - DASHED LINE INDICATES FIELD WIRING.



REVISION	DATE	DESCRIPTION
R1	4/12/95	REF. DWGS & ALTERED AS SWITCH
R2	3/19/96	WIRING ERRORS
R3	9/28/99	WIRING ERRORS
R4	12/16/99	FOR GC0698
R5	10/31/07	T-SHETS & NOTES

WIRING DIAGRAM	DATE
VOLTAGE MONITOR	1/17/94
48 CIRCUIT MAX	
CLASS 304	
SC: 5/8"=1" D/LX	

CONTRIBUTOR	PROJECT
NELSON HEAT TRACING SYSTEMS	GD-332
PHONE (918)222-5330	FAX (918)222-8308