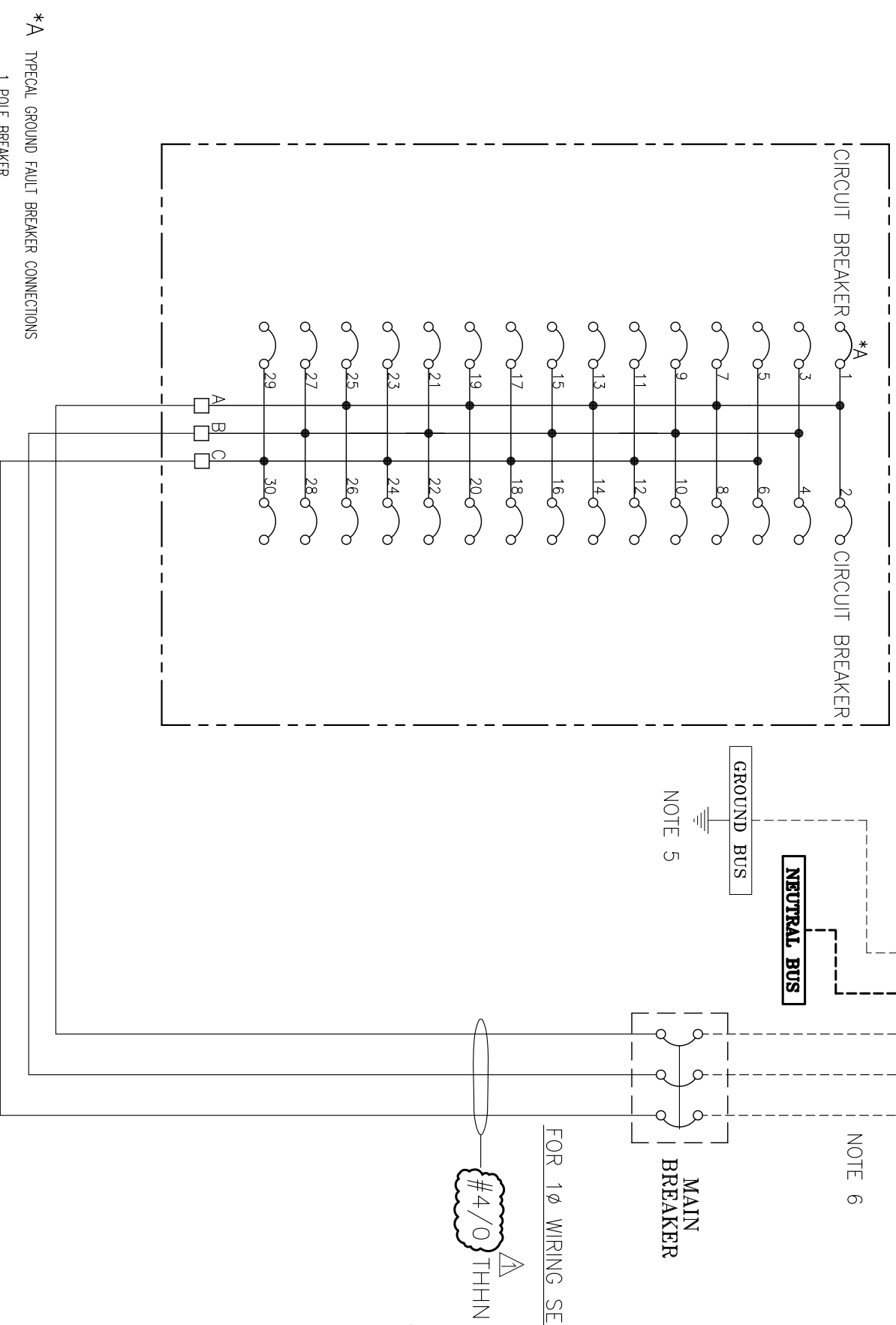
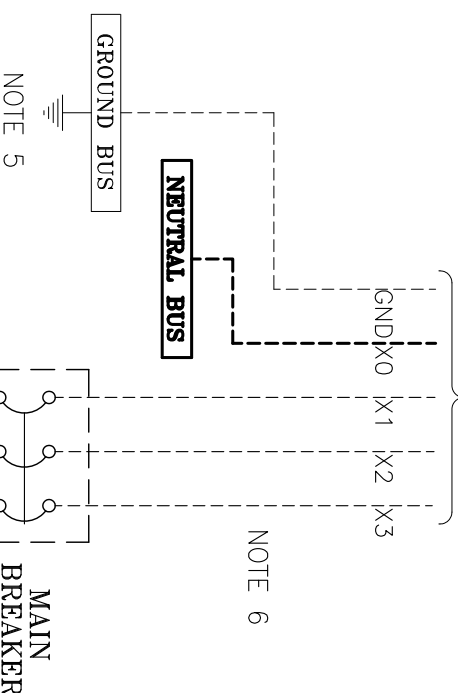


**BREAKER
PANELBOARD**

NOTE 3



△ CUSTOMER'S THREE PHASE
FOUR WIRE SOURCE, 120/208V
225A MAX. WITH EQUIPMENT GROUND



FOR 1Ø WIRING SEE NOTE 7.

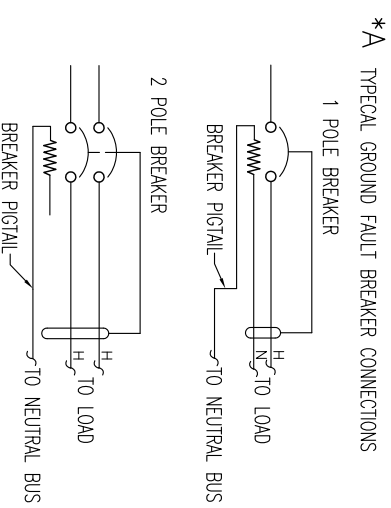
REFERENCE DRAWING

GD-403	ASSEMBLY
GB-626	FIELD WIRING (3Ø)
GA-2262	DOOR MACHINING (NON-DISCONNECT ENCLOSURE)
GA-2263	DOOR MACHINING (DISCONNECT ENCLOSURE)

NOTES:

1. ALL WIRE TO HAVE INSULATION SPADE TYPE LUGS AND NATVAR TUBING WITH PRINTED WIRE NUMBERS. OMIT THE LUG ON THE COMPRESSION OR SADDLE TYPE TERMINAL.
2. DASHED LINES INDICATE FIELD WIRING.
3. IF GROUND FAULT BREAKERS ARE USED, CONDUIT MUST BE DRY AND ELECTRICAL CONNECTIONS IN JUNCTION BOX MUST BE WATER-TIGHT. BREAKER TRIPPING WILL RESULT IF THESE CONDITIONS ARE NOT MET.
4. TO HELP PREVENT CONDENSATION ENTERING ENCLOSURE, INSTALL CONDUIT USING BOTTOM ENTRY WHEN POSSIBLE.
5. ENCLOSURE MUST BE GROUNDED PER APPLICABLE ELECTRICAL CODES.
6. DASHED LINE INDICATES FIELD WIRING.
7. FOR A SINGLE PHASE SOURCE, ELIMINATE X3, WIRING TO L3 OF MAIN BREAKER, AND WIRING TO PHASE "C" OF PANELBOARD.

COMPANY CONFIDENTIAL—INFORMATION CONTAINED HEREIN IS CONFIDENTIAL, IT IS THE PROPERTY OF NELSON HEAT TRACE, IT IS TO BE USED SOLELY FOR THE PURPOSE PROVIDED, AND IT IS NOT TO BE DISCLOSED TO OTHERS WITHOUT PRIOR WRITTEN CONSENT OF NELSON HEAT TRACE.



SHOP NOTES:

1. REMOVE PAINT FROM PANEL, UNDER GROUND BUS, BEFORE MOUNTING GROUND BUS
2. LEAVE 4.25" CLEARANCE BETWEEN BOTTOM OF PANEL—BOARD AND BOTTOM OF ENCLOSURE TO INSURE PROPER BEND RADIUS OF 1/0 CONDUCTORS.

REVISION	DATE	REVISION	DATE
R0 ISSUED FOR MANUFACTURE	10/1/02	R1 INCREASE WIRE SIZE & RATING	05/23/06
WIRING DIAGRAM DISTRIBUTION PANEL (3PH) 30 CIRCUIT 120/208VAC MAX NEMA 12, 4, 4X		REF: GD403 DSGN: DMB APPD: DMB DOC#: GB625	
CATALOG# DP302PC CLASS 305		SC: NONE D/L	
CONFIDENTIAL PROPERTY OF NELSON HEAT TRACING SYSTEMS TULSA, OK, USA PHONE (918)627-5530 FAX (918)622-9308		GB625 R 1	