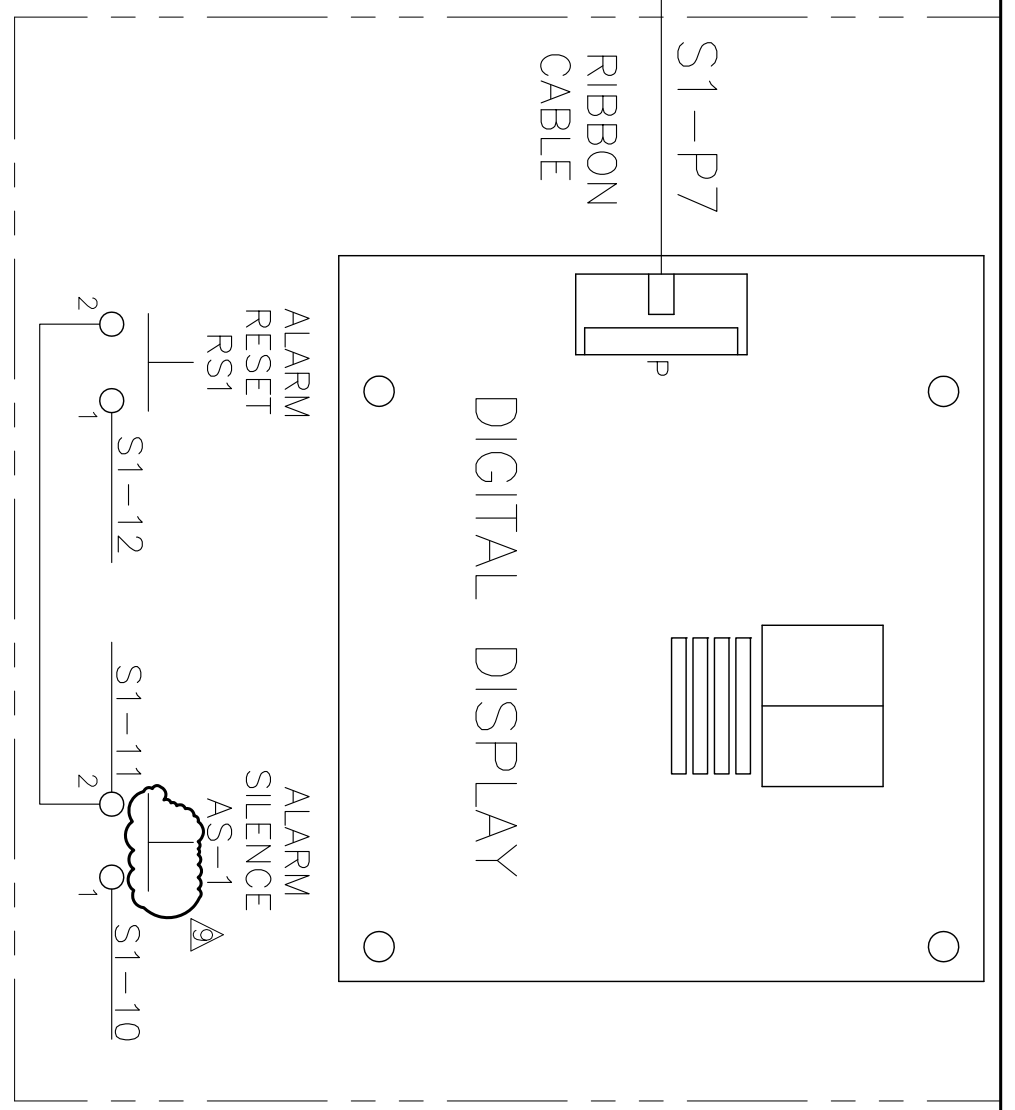
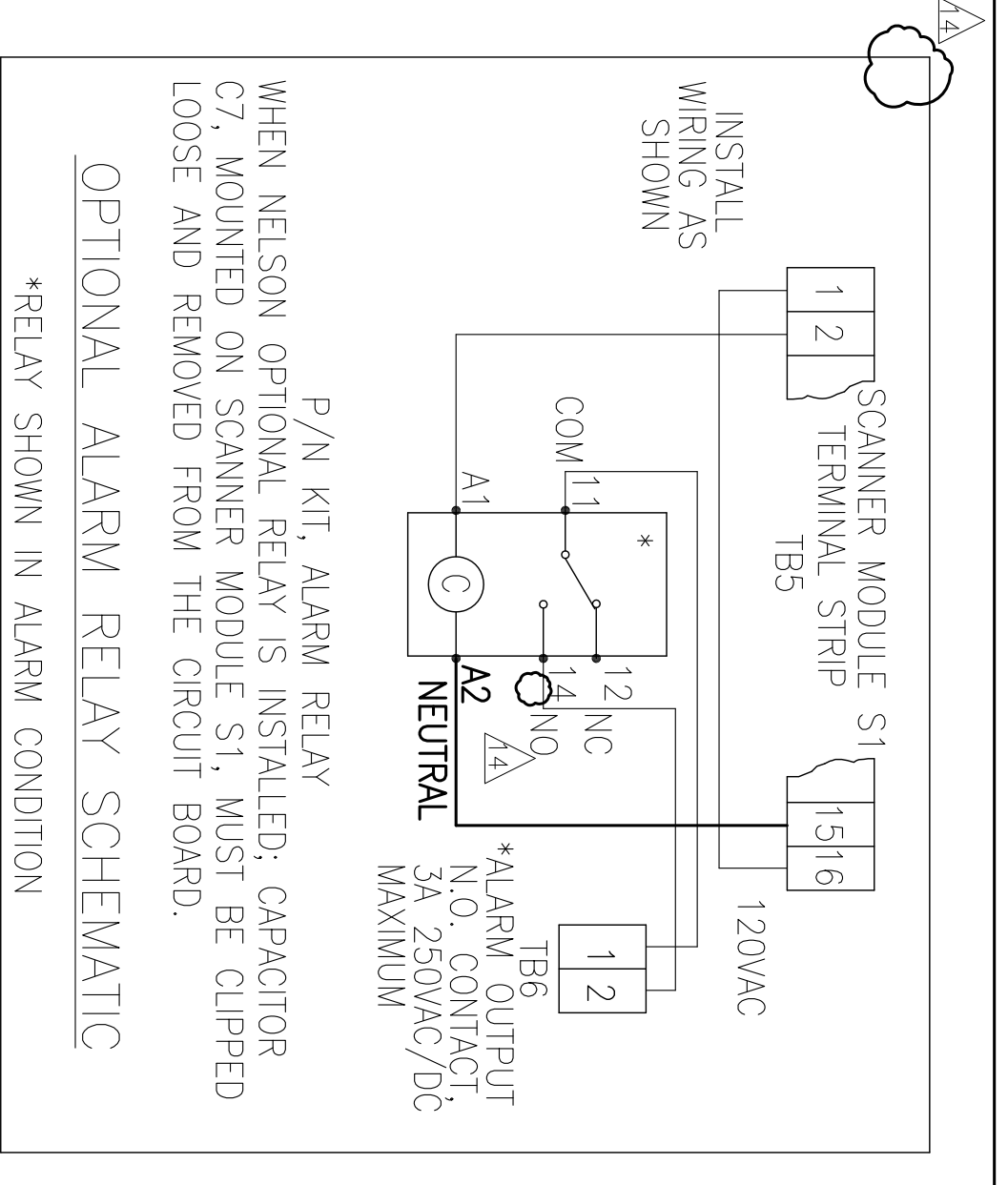


DOOR REAR VIEW

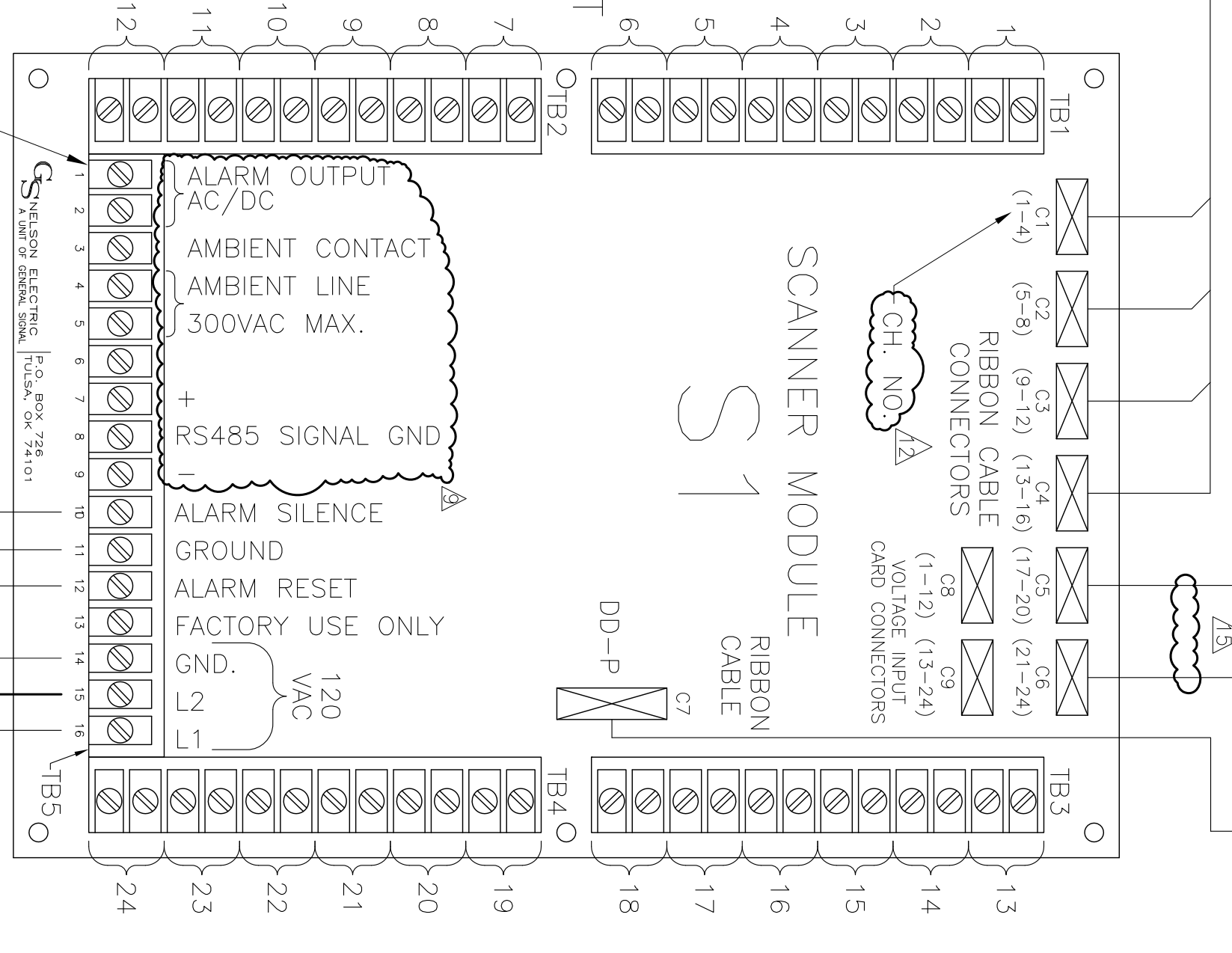


PARALLEL HEATER CONTINUITY MONITOR AT END OF CABLE.



P/N KIT, ALARM RELAY
 WHEN NELSON OPTIONAL RELAY IS INSTALLED, CAPACITOR C7, MOUNTED ON SCANNER MODULE S1, MUST BE CLIPPED LOOSE AND REMOVED FROM THE CIRCUIT BOARD.
OPTIONAL ALARM RELAY SCHEMATIC
 *RELAY SHOWN IN ALARM CONDITION

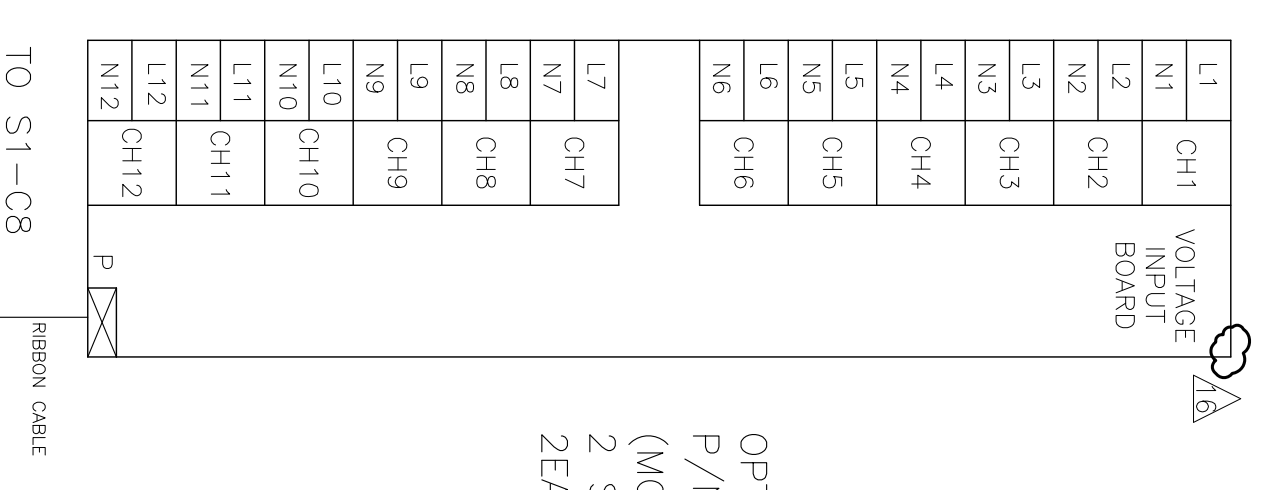
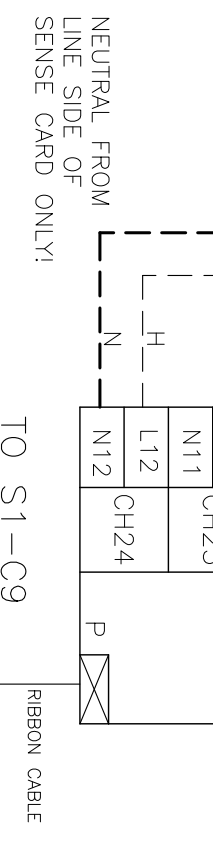
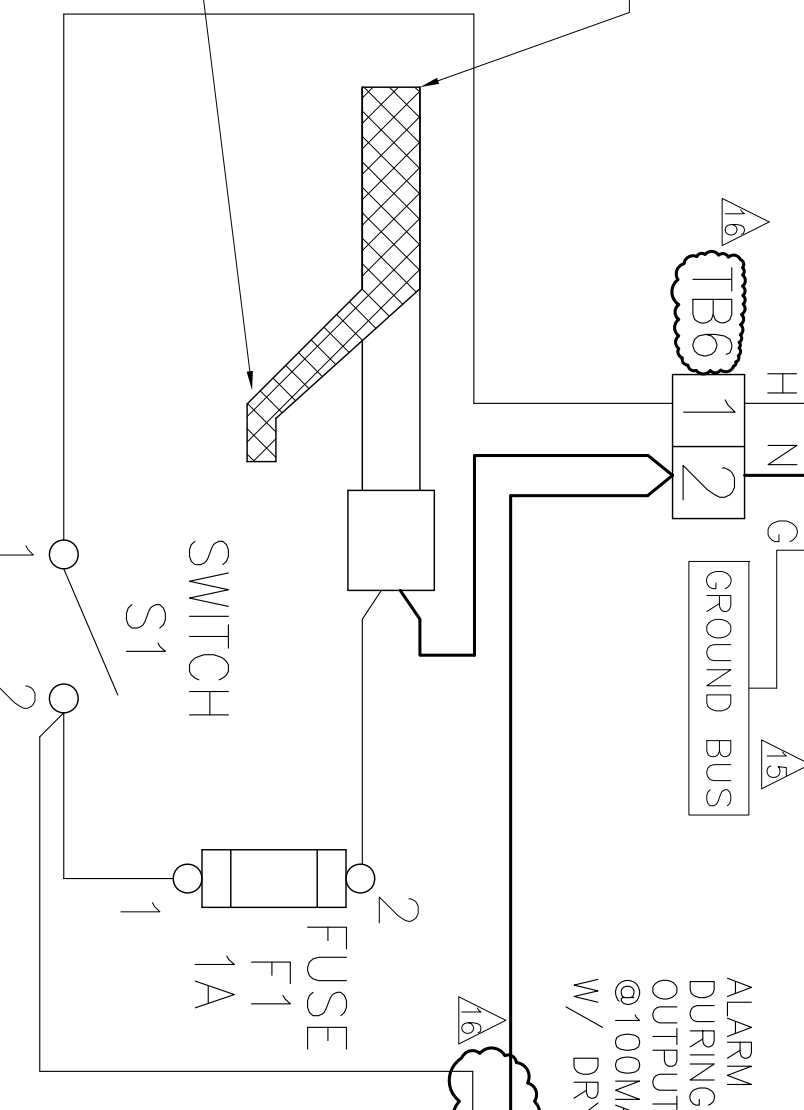
SEE NOTE 5 FOR AMBIENT OPERATION CONNECTIONS



ALARM OUTPUT IS ENERGIZED DURING NORMAL OPERATION. OUTPUT RATING: 120V AC/DC @100MA MAX. OPTIONAL RELAY W/ DRY CONTACTS AVAILABLE.

GROUND TERMINAL TB5-14 TO GROUND BUS

6 FT. OF LT-8-CB HEATING CABLE FOR USE AS SPACE HEATER. MOUNT IN UPPER PART OF ENCLOSURE FOR BEST RESPONSE.



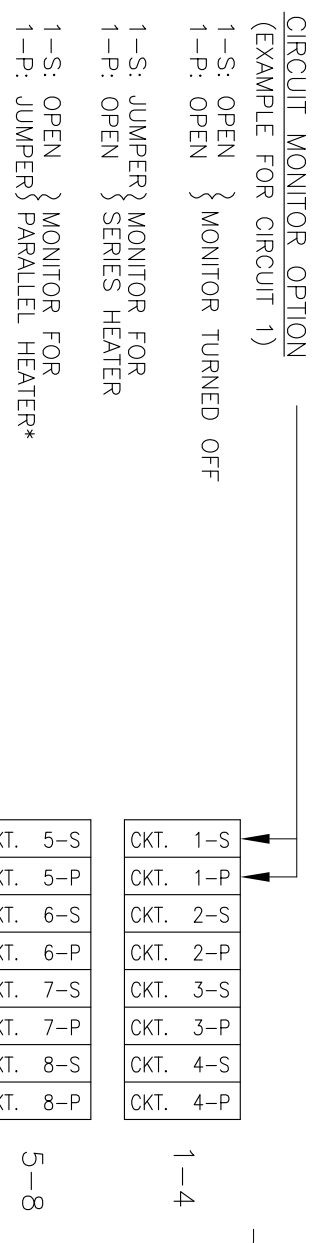
OPTIONAL VOLTAGE INPUT BOARD P/N GD0115. FOR PROCESS MONITORING.

OPTIONAL VOLTAGE INPUT BOARD P/N GD0115. USING 2 SENSOR BOARDS, G80366, USING ZEA BRACKETS P/N G80387)

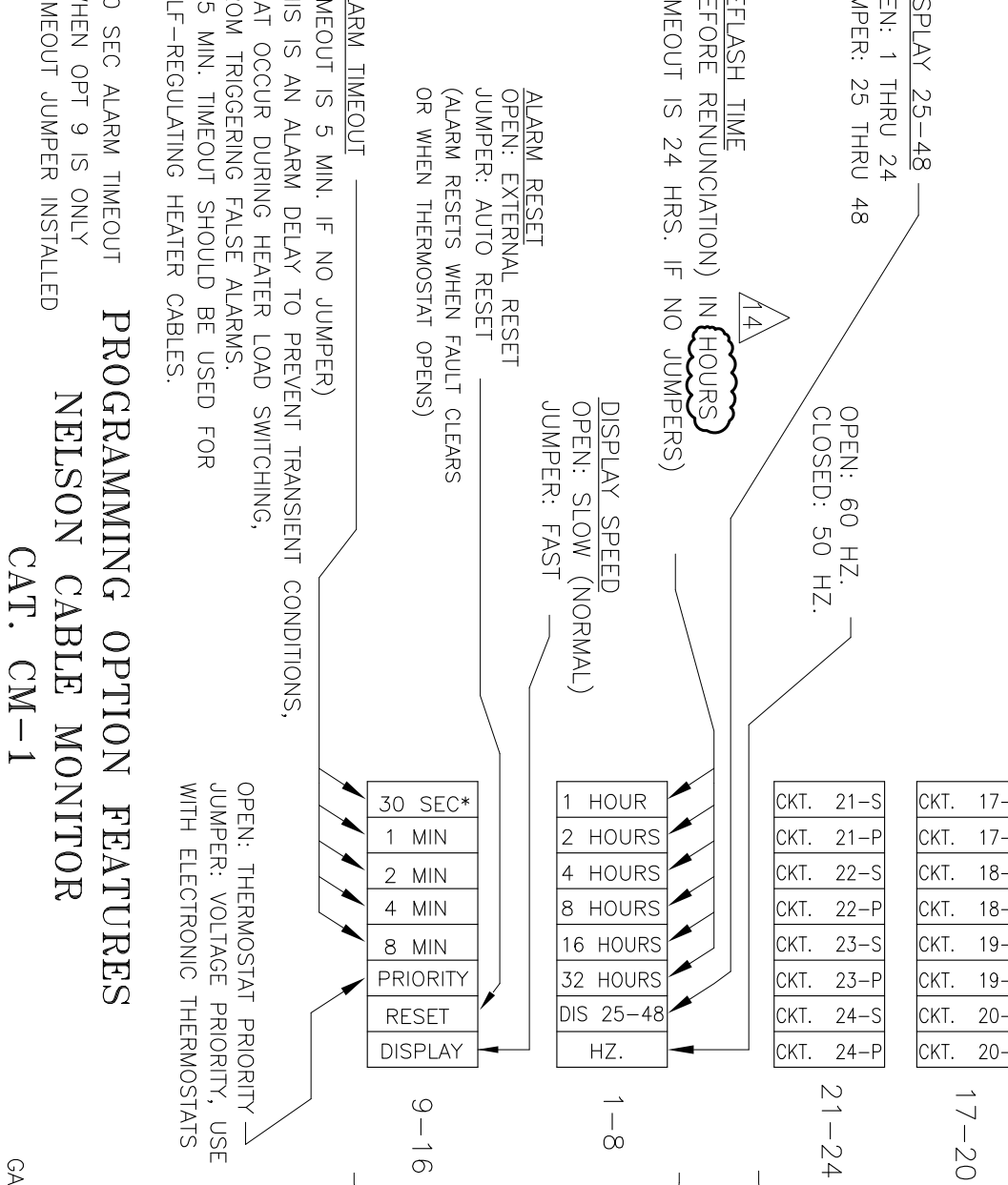
OPTIONAL VOLTAGE INPUT BOARD P/N GD0115 (MOUNT BOARD ON TOP OF 2 SENSOR BOARDS, G80366, USING ZEA BRACKETS P/N G80387)

- NOTES:**
- CONTROL WIRE TO BE #18 TYPE SIS (DOES NOT APPLY TO RIBBON CABLE).
 - DO NOT ROUTE RIBBON CABLE IN WIRE DUCTS.
 - SEE INSTRUCTION SHEET ON REAR OF DOOR FOR IDENTIFICATION OF OPTION FEATURES. (ALSO REPRODUCED BELOW.)
 - ALL WIRES TO HAVE INSULATED SPADE LUGS AND NATVAR TUBING WITH PRINTED WIRE NUMBERS.
 - FOR AMBIENT OPERATION A THERMOSTAT DRY CONTACT CAN BE WIRED BETWEEN TB5 TERMINALS 3 & 11. ALSO 120VAC FROM A THERMOSTAT, CAN BE APPLIED BETWEEN TB5 TERMINALS 4 & 5 TO ACHIEVE THE SAME AMBIENT OPERATION.

TYPICAL FOR ALL CIRCS.



*PARALLEL HEATER CONTINUITY MONITORING TO MONITOR BUS CONTINUITY WITH THIS UNIT, A CONTINUITY MONITOR DEVICE (CMD) MUST BE ATTACHED TO THE FAR END OF EACH PARALLEL HEATING CABLE AFTER IT IS INSTALLED.



PROGRAMMING OPTION FEATURES
 NELSON HEAT TRACING SYSTEMS
 CAT. CM-1

DATE	7/11/00	REVISION	99
DATE	9/1/00	REVISION	10
DATE	2/20/01	REVISION	12
DATE	4/11/01	REVISION	14
DATE	01/17/03	REVISION	15
DATE	06/07/05	REVISION	16
DATE	10/06/05	REVISION	17

DATE	7/11/00	REVISION	99
DATE	9/1/00	REVISION	10
DATE	2/20/01	REVISION	12
DATE	4/11/01	REVISION	14
DATE	01/17/03	REVISION	15
DATE	06/07/05	REVISION	16
DATE	10/06/05	REVISION	17